

PMR EXPLORATION, LLC

CHERRY CLAIMS PROJECT

MONARCH MINE
GOLDEN IDOL MINE
(HILLSIDE)
CHERRY KING MINE
GOLD EAGLE MINE



PMR EXPLORATION, LLC - property information sheet

Name: Cherry Claims Project

Status: Available

Target mineral(s): Gold

Location: Yavapai County Arizona, Cherry Creek Mining District.
Township 14N - R3E - Section(s) 3-4-9-10-15

Type: 8 unpatented Federal lode claims. Total 160 acres.

AMC#405356 - AMC#405357 - AMC#405358 - AMC#405359 - AMC#406040
AMC#406041 - AMC#406042 - AMC#406043

WORKINGS: These claims cover four unique past producing gold mines in the Cherry Creek Mining District: The Monarch Mine, The Hillside (Golden Idol) Mine, The Cherry King Mine, The Gold Eagle Mine 1&2

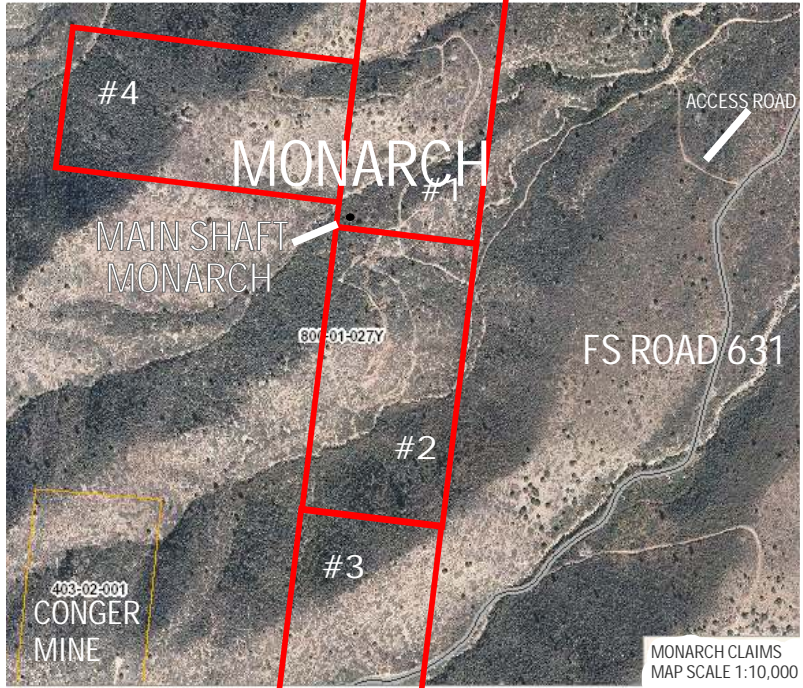
Terms: Available as a full package, all 8 claims for \$15,000 cash or \$5,000 down - \$1000/month for 12 months (\$17,000 terms price). Or break up package into the four Monarch claims (Monarch package): \$7500 cash or \$2500 down - \$1000/month for 6 months (\$8,500 terms price). Golden Idol - Hillside package: \$7,500 cash or \$2,500 down - \$1000/month for 6 months (\$8,500 terms price). Golden Idol package includes (Hillside claim, Golden Eagle #1, Golden Eagle #2, Cherry King).

Buyer shall pay normal yearly maintenance fees to BLM while under contract.

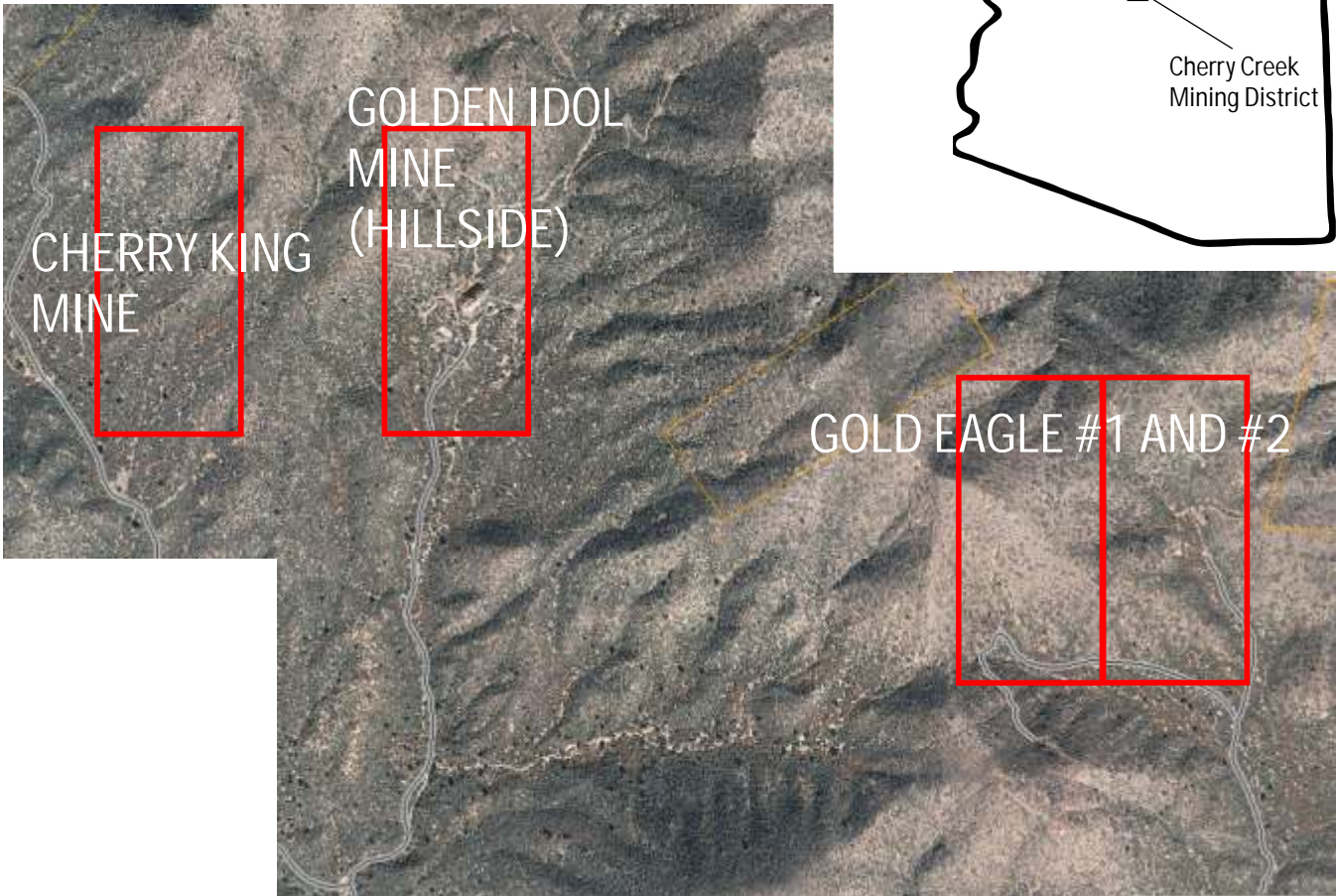
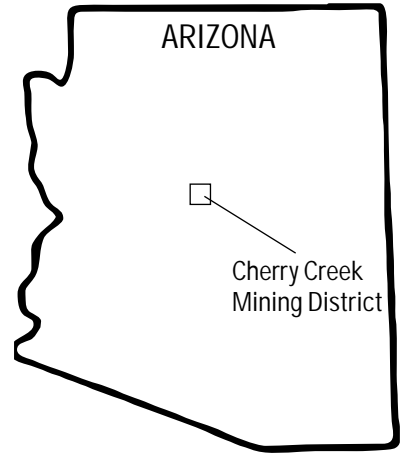
Contact: Rex Clark - Partner/Sales Agent ph. (928) 308-0700

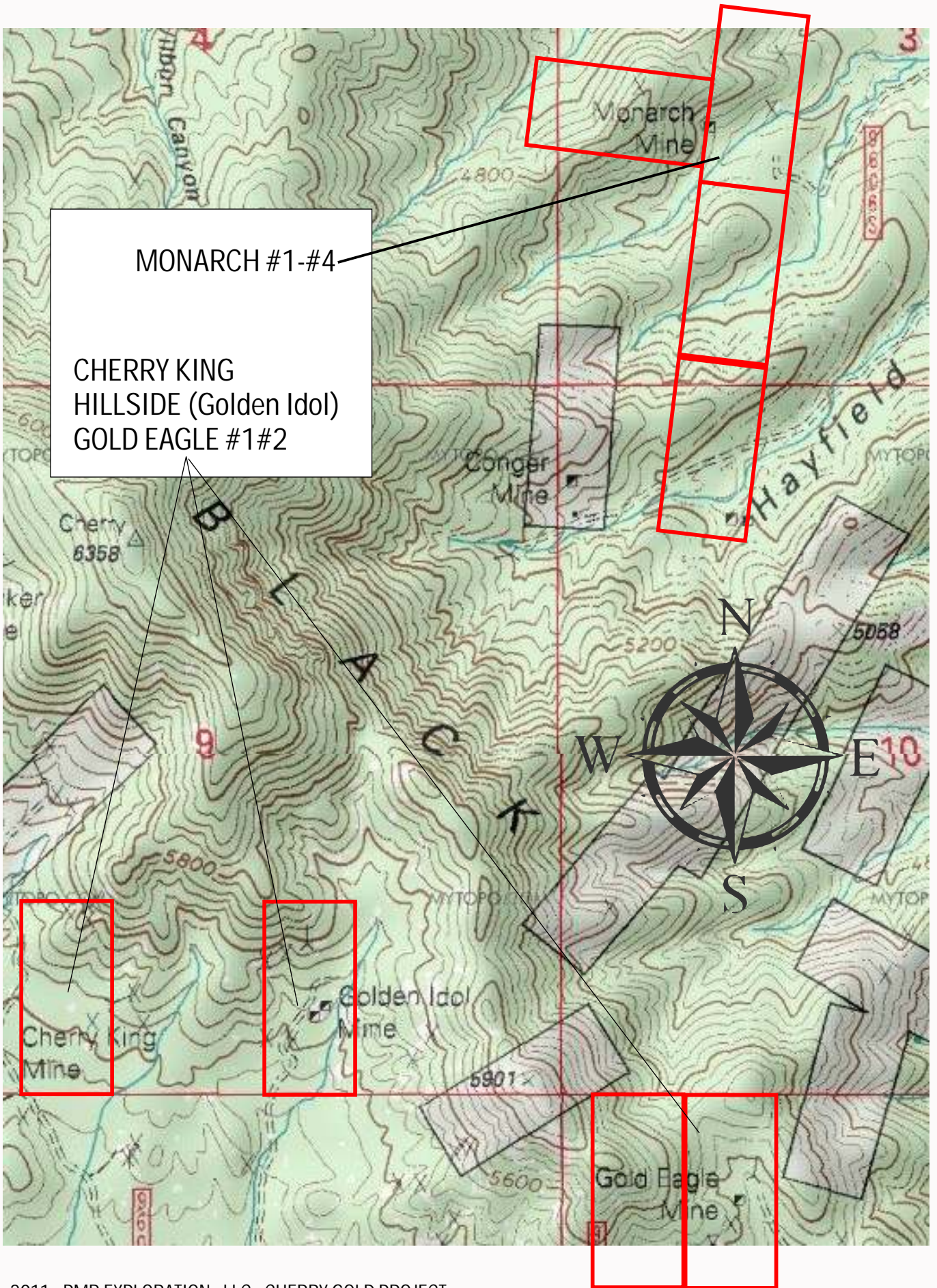
Access: (Monarch) Take HWY 260 heading West from I-17. Turn left across from E. Thousand Trails Road. Drive .25 miles and turn left at FS Road 361. Drive about 4 miles. Turn right at unmarked road and drive toward Monarch Mine. (Gold Eagle - Cherry King - Golden Idol) Take HWY 260 to Cherry Road and head towards Cherry, AZ. Claims are accessed via various FS roads which run west from Cherry Road.

CENTER OF PROJECT
 (monarch) 34.62255
 LAT/LONG -112.02185



(Conger Mine - 20 acre patented claim, sold for \$605,000 cash in 2006 according to county records)





The Monarch Claims

History: The Monarch was first worked in 1886, and then on and off until the 1930's. Located in the Cherry Creek Mining District, the Monarch more than likely produced more gold than any other mine in the area.

The property has had several owners over time. It was owned and/or worked by Wombacker, Verde Mines Development, and more recently owned by Alanco, SearchLight Exploration, and Middle Verde Dev.

The area of the mine is about 4,500 foot elevation. According to historical records the workings in the oxidized zones were mostly free-milling. The ore averaged about 1oz/ton.



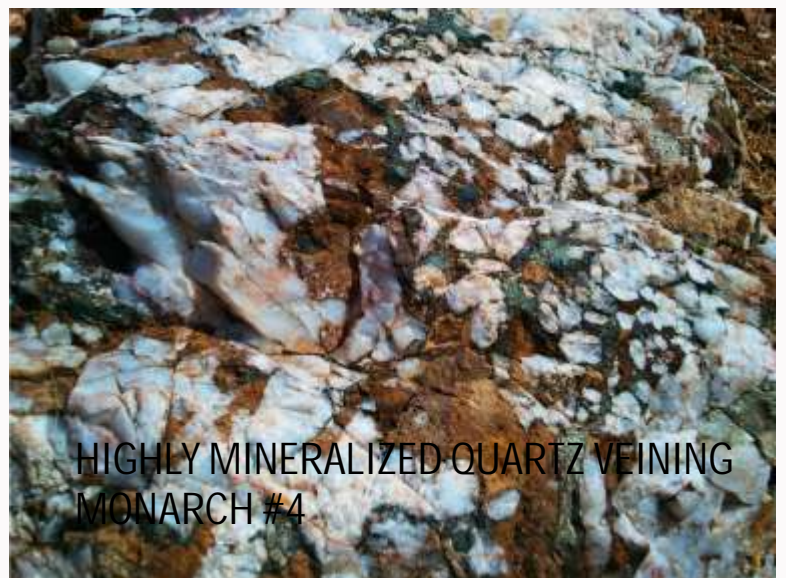
OLD STAMP MILL SITE
MONARCH #2



TYPICAL CORNER MONUMENT
MONARCH #2

Geology:

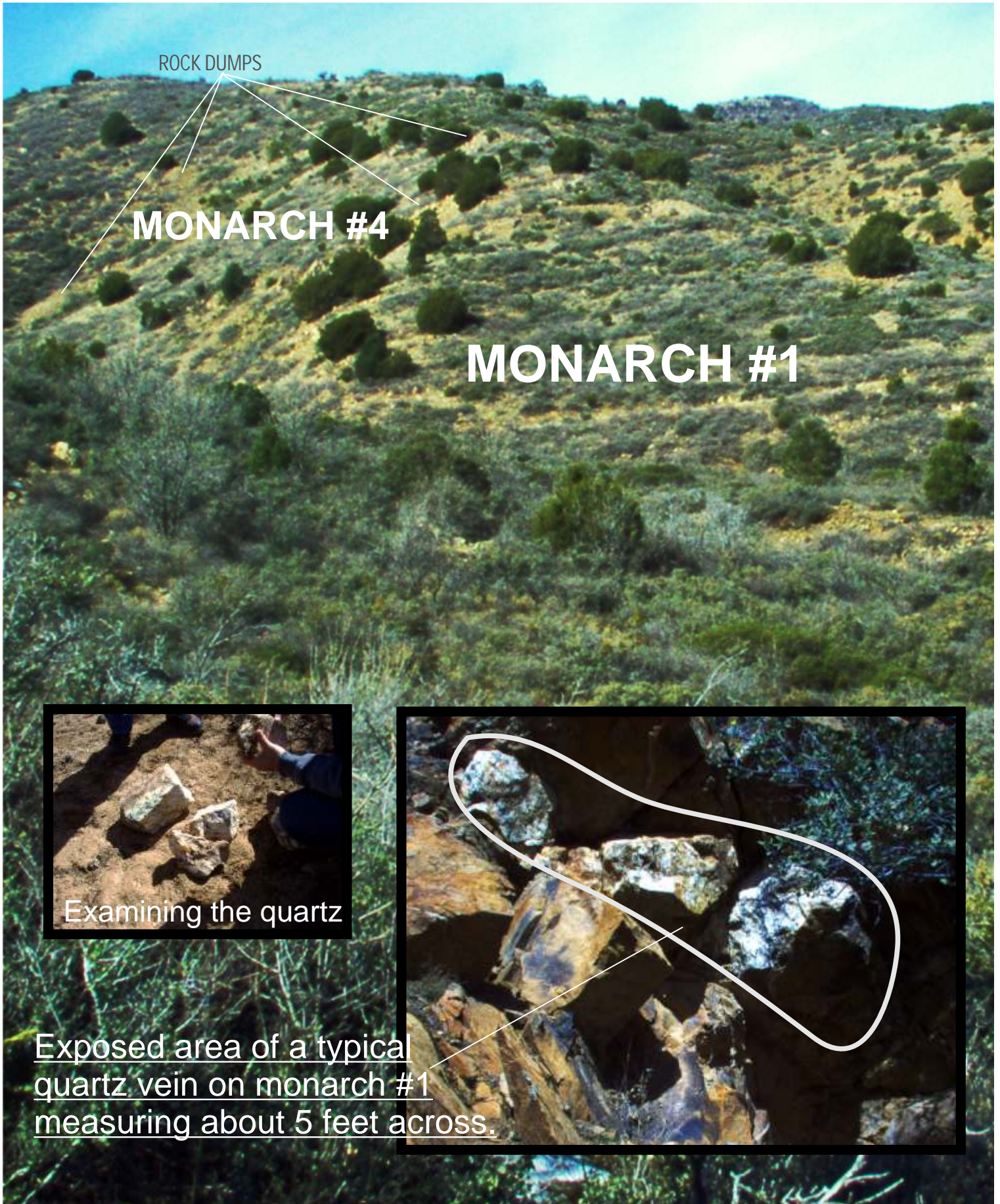
The country rock is a sandy light-colored granite containing quartz, feldspar, and a little biotite and hornblende, with a few veinlets of epidote. There are several quartz veins striking N. 10°–20° E. and dipping 32°–45° W. The coarsely crystalline white quartz occurs in lenses several feet in maximum width, and carries bright-yellow native gold in wholly irregular pockets and small shoots. The gold occurs mainly as particles in the solid quartz. The ore is said to yield some concentrates of galena and chalcopyrite. Current proven or probable reserve status is not known.



HIGHLY MINERALIZED QUARTZ VEINING
MONARCH #4

References:

USGS Mineral Resources of the US (1907)
Lindgren, W (1926), Ore deposits of the Jerome and Bradshaw Mountain quadrangles, Arizona USGS Bulletin 782
Anderson, CA & Creasey (1958) Geology and ore deposits of the Jerome area, USGS PP 308
US Bureau of Mines - Arizona Bureau of Geology and Mining Technology file data. MRDS database Dep ID 10048058, MRDS ID #M800026; and Dep ID 10186781, MAS ID#0040251436



ROCK DUMPS

MONARCH #4

MONARCH #1

Examining the quartz

Exposed area of a typical quartz vein on monarch #1 measuring about 5 feet across.

Gold Eagle #1 and #2

Located about 2 miles NE of Cherry, AZ at Section 15 – T14N – R3E. Mineralization is a vein deposit with ore in lenses and pods. The vein strikes N.35°E. and dips 5°-35°W. Ore control was faulting and shearing. Ore concentration was oxidation at near surface. No alteration was noted. An associated rock unit is the informally-named Cherry Creek Quartz Diorite.

Hillside

The Hillside is also known as the Golden Idol Mine. It is located about 1.5 miles North-Northeast of Cherry, AZ. The elevation is about 5,400 feet. Near the opening (now covered) of the main shaft, there is a 4 foot vein of sheared granite with bunches of quartz. The quartz shows bluish-black streaks of microscopic tourmaline. Also some pyrite and chalcopyrite. Gold was the primary target – Copper and Iron secondary. The mine was mostly worked from 1907 to 1910. The ore averaged about a half an ounce gold to the ton.

Cherry King

The Cherry King is located 1 mile north of Cherry, AZ. It was worked in 1935. It was mined for Gold and some Silver and Copper was also found. The associated rock is Cherry Quartz Diorite.

Some historical and geological information provided by: †Ref.: Anderson, C.A. & S.C. Creasey (1958), Geology and ore deposits of the Jerome area, Yavapai County, Arizona, USGS PP 308: 176. †Ref.: USGS Mineral Resources of the US (1907): Pt 1: 182. Lindgren, W. (1926), Ore deposits of the Jerome and Bradshaw Mountains quadrangles, Arizona, USGS Bull. 782: 30, 105. Wilson, E.D. (1934), Arizona Lode Gold Mines and Gold Mining, Arizona Bureau of Mines Bull. 137: 29-30.

Please contact Rex Clark at (928) 308-0700
to proceed with lease/purchase of this complete
gold package.